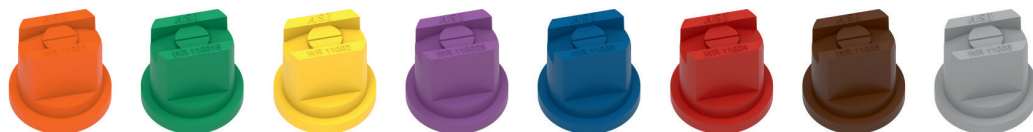


WR

WIDE RANGE



DIMENSIONI (mm) • SIZE (mm) • DIMENSIONES (mm)

UTILIZZO • USE • UTILIZACIÓN

Herbicides
Suitable for

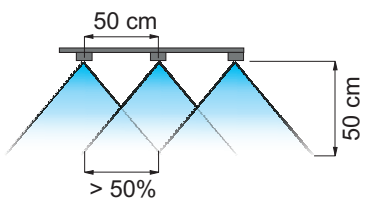
Fungicides
Suitable for

Insecticides
Suitable for

- Copertura costante in tutto l'intervallo delle pressioni.
- Angolo costante di 110° al variare della pressione già da 1 bar.
- Riduce la deriva a pressioni di 1 -1,5 bar e garantisce un'eccellente copertura già a 1,5 - 2 bar.
- Stampato in resina acetamica, ad alta stabilità chimica, che conferisce ottime caratteristiche di durata.
- Smooth coverage within a wide pressure range.
- Steady 110° jet angle as pressure changes, from 1 bar.
- They reduce drift at 1 - 1.5 bar and ensure a good coverage starting from just 1.5 - 2 bar.
- Made of molded acetal resin, a polymer ensuring high chemical stability and an exceptionally long useful life.
- Cobertura constante en un amplio rango de presiones.
- Ángulo constante de 110° al variar la presión ya desde 1 bar.
- Reduce la deriva con presiones de 1 -1,5 bar y garantiza una excelente cobertura a 1,5 - 2 bar.
- Moldeado en resina acetálica, material con alta estabilidad química, que otorga excepcionales características de duración.



Copertura
Spray coverage
Cobertura



Distanza sulla barra
Boom spacing
Distancia en la barra

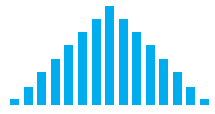


Diagramma di distribuzione ugello singolo
Single nozzle distribution pattern
Diagrama de distribución boquilla individual

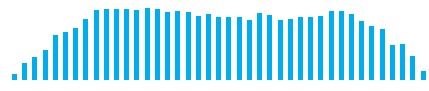
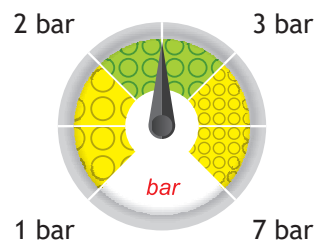
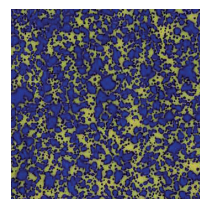


Diagramma di distribuzione su barra
Boom distribution pattern
Diagrama de distribución en la barra

<p>110° Spraying angle</p>	<p>Boom Treatment</p>	<p>ISO 10625 Colour coding</p>
<p>25 pcs. cod. + B2 Blister pack</p>	<p>402900xx Cap</p>	<p>Acetal Resin Material</p>






Dimensione delle gocce su bersaglio
Drop size pattern on target
Dimensiones de las gotas en el blanco



[WR]

WIDE RANGE

COD. CODE CÓD.	 bar	 drop	 l/min	l/ha (spazio tra gli ugelli: 50 cm) l/ha (nozzle spacing: 50 cm) l/ha (espacio entre las boquillas: 50 cm)									
				4 km/h	6 km/h	8 km/h	10 km/h	12 km/h	14 km/h	16 km/h	18 km/h	20 km/h	25 km/h
WR11001	1	F	0.23	69	46	35	28	23	20	17	15	14	11
	2	F	0.33	98	65	49	39	33	28	24	22	20	16
	3	F	0.40	120	80	60	48	40	34	30	27	24	19
	5	VF	0.52	155	103	77	62	52	44	39	34	31	25
7	VF	0.61	183	122	92	73	61	52	46	41	37	29	
WR110015	1	F	0.35	104	69	52	42	35	30	26	23	21	17
	2	F	0.49	147	98	73	59	49	42	37	33	29	24
	3	F	0.60	180	120	90	72	60	51	45	40	36	29
	5	F	0.77	232	155	116	93	77	66	58	52	46	37
7	VF	0.92	275	183	137	110	92	79	69	61	55	44	
WR11002	1	M	0.46	139	92	69	55	46	40	35	31	28	22
	2	F	0.65	196	131	98	78	65	56	49	44	39	31
	3	F	0.80	240	160	120	96	80	69	60	53	48	38
	5	F	1.03	310	207	155	124	103	89	77	69	62	50
7	F	1.22	367	244	183	147	122	105	92	81	73	59	
WR110025	1	M	0.58	173	115	87	69	58	49	43	38	35	28
	2	F	0.82	245	163	122	98	82	70	61	54	49	39
	3	F	1.00	300	200	150	120	100	86	75	67	60	48
	5	F	1.29	387	258	194	155	129	111	97	86	77	62
7	F	1.53	458	306	229	183	153	131	115	102	92	73	
WR11003	1	M	0.69	208	139	104	83	69	59	52	46	42	33
	2	M	0.98	294	196	147	118	98	84	73	65	59	47
	3	F	1.20	360	240	180	144	120	103	90	80	72	58
	5	F	1.55	465	310	232	186	155	133	116	103	93	74
7	F	1.83	550	367	275	220	183	157	137	122	110	88	
WR11004	1	M	0.92	277	185	139	111	92	79	69	62	55	44
	2	M	1.31	392	261	196	157	131	112	98	87	78	63
	3	M	1.60	480	320	240	192	160	137	120	107	96	77
	5	M	2.07	620	413	310	248	207	177	155	138	124	99
7	M	2.44	733	489	367	293	244	209	183	163	147	117	
WR11005	1	M	1.15	346	231	173	139	115	99	87	77	69	55
	2	M	1.63	490	327	245	196	163	140	122	109	98	78
	3	M	2.00	600	400	300	240	200	171	150	133	120	96
	5	M	2.58	775	516	387	310	258	221	194	172	155	124
7	M	3.06	917	611	458	367	306	262	229	204	183	147	
WR11006	1	C	1.39	416	277	208	166	139	119	104	92	83	67
	2	M	1.96	588	392	294	235	196	168	147	131	118	94
	3	M	2.40	720	480	360	288	240	206	180	160	144	115
	5	M	3.10	930	620	465	372	310	266	232	207	186	149
7	M	3.67	1.100	733	550	440	367	314	275	244	220	176	

Classificazione in accordo con lo standard
ASABE S572.3 e la norma ISO25358

Classification according to ASABE S572.3 and ISO25358

Clasificación según ASABE S572.3 e ISO25358

	DIMENSIONE DELLE GOCCE DROP SIZE RATING DIMENSIONES DE LAS GOTAS
VF	Molto fine - Very fine - Muy fina
F	Fine - Fine - Fina
M	Media - Medium - Media
C	Grossa - Coarse - Gruesa