

# HOLLOWCONE CERAMIC ISO 80°

# HCI 80

Ugelli a cono  
Cone nozzles  
Boquillas de cono



**Utilizzo**  
**Use**  
**Utilización**

**Herbicides**

Suitable for

**Fungicides**

Suitable for

**Insecticides**

Suitable for

**Dimensioni (mm)**  
**Size (mm)**  
**Dimensiones (mm)**

- Ugello a cono vuoto con inserto in ceramica e corpo in Delrin®.
- Il getto creato da Hollowcone Ceramic genera piccole gocce e garantisce una copertura eccellente.
- Adatto per l'utilizzo su atomizzatore.
- Perfetto per l'utilizzo su alberi e cespugli anche senza l'intervento dell'aria.

- Hollowcone nozzle with ceramic insert and Delrin® body.
- Hollowcone Ceramic nozzles spray small drops and ensure excellent coverage.
- Suitable for orchard sprayer.
- Perfect for trees and bushes without requiring the use of air.

- Boquilla de cono vacío con inserto de cerámica y cuerpo en Delrin®.
- El chorro creado por Hollowcone Ceramic tiene pequeñas gotas y garantiza una excelente cobertura.
- Adecuado para el uso en atomizador.
- Perfecta para el uso en árboles y arbustos, incluso sin la intervención del aire.



80°

Spraying angle

Orchard

Treatment

Boom

Treatment

Ceramic

Material

ISO 10625

Colour coding

402905xx

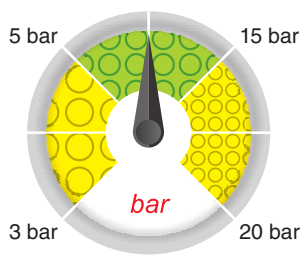
Cap

10 pcs.

cod. + B1  
Blister pack

5-10 Nm

Tightening torque for nuts



Copertura  
Spray coverage  
Cobertura

Distribuzione  
Nozzle distribution pattern  
Distribución

Dimensione delle gocce su bersaglio  
Drop size pattern on target  
Dimensiones de las gotas en el blanco

COD.	q (l/min)																		
	3 bar	4 bar	5 bar	6 bar	7 bar	8 bar	9 bar	10 bar	11 bar	12 bar	13 bar	14 bar	15 bar	16 bar	17 bar	18 bar	19 bar	20 bar	
HCI80005	0.20	0.23	0.26	0.28	0.31	0.33	0.35	0.37	0.38	0.40	0.42	0.43	0.45	0.46	0.48	0.49	0.50	0.52	
HCI800075	0.30	0.35	0.39	0.42	0.46	0.49	0.52	0.55	0.57	0.60	0.62	0.65	0.67	0.69	0.71	0.73	0.75	0.77	
HCI80001	0.40	0.46	0.52	0.57	0.61	0.65	0.69	0.73	0.77	0.80	0.83	0.86	0.89	0.92	0.95	0.98	1.01	1.03	
HCI80015	0.60	0.69	0.77	0.85	0.92	0.98	1.04	1.10	1.15	1.20	1.25	1.30	1.34	1.39	1.43	1.47	1.51	1.55	
HCI80002	0.80	0.92	1.03	1.13	1.22	1.31	1.39	1.46	1.53	1.60	1.67	1.73	1.79	1.85	1.90	1.96	2.01	2.07	
HCI80025	1.00	1.15	1.29	1.41	1.53	1.63	1.73	1.83	1.91	2.00	2.08	2.16	2.24	2.31	2.38	2.45	2.52	2.58	
HCI80003	1.20	1.39	1.55	1.70	1.83	1.96	2.08	2.19	2.30	2.40	2.50	2.59	2.68	2.77	2.86	2.94	3.02	3.10	
HCI80035	1.40	1.62	1.81	1.98	2.14	2.29	2.42	2.56	2.68	2.80	2.91	3.02	3.13	3.23	3.33	3.43	3.52	3.61	
HCI80004	1.60	1.85	2.07	2.26	2.44	2.61	2.77	2.92	3.06	3.20	3.33	3.46	3.58	3.70	3.81	3.92	4.03	4.13	
HCI80005	2.00	2.31	2.58	2.83	3.06	3.27	3.46	3.65	3.83	4.00	4.16	4.32	4.47	4.62	4.76	4.90	5.03	5.16	

Calcolo dei l/ha nelle note tecniche a fine catalogo

How to calculate l/ha in the technical suggestions section, at the end of the catalogue

Cálculo de los l/ha en las notas técnicas al final del catálogo