

# HOLLOWCONE CERAMIC ISO 40°


# HCI 40

Ugelli a cono  
Cone nozzles  
Boquillas de cono




**Utilizzo**  
**Use**  
**Utilización**

**Herbicides**




Suitable for

**Fungicides**



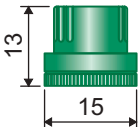
Suitable for

**Insecticides**



Suitable for

**Dimensioni (mm)**  
**Size (mm)**  
**Dimensiones (mm)**



- Ugello a cono vuoto con inserto in ceramica e corpo in Delrin®.
- Il getto creato da Hollowcone Ceramic genera piccole gocce e garantisce una copertura eccellente.
- Adatto per l'utilizzo su atomizzatore.
- Perfetto per l'utilizzo su alberi e cespugli anche senza l'intervento dell'aria.
- Limita la sovrapposizione del getto anche in filari dove non sarebbe possibile utilizzare ugelli con angoli più larghi.

- Hollowcone nozzle with ceramic insert and Delrin® body.
- Hollowcone Ceramic nozzles spray small drops and ensure excellent coverage.
- Suitable for orchard sprayer.
- Perfect for trees and bushes without requiring the use of air.
- It limits overspraying even in case of rows preventing use of nozzles with a wider angle.

- Boquilla de cono vacío con inserto de cerámica y cuerpo en Delrin®.
- El chorro creado por Hollowcone Ceramic tiene pequeñas gotas y garantiza una excelente cobertura.
- Adecuado para el uso en atomizador.
- Perfecta para el uso en árboles y arbustos, incluso sin la intervención del aire.
- Limita la superposición del chorro incluso en hileras donde no sería posible utilizar boquillas con ángulos más anchos.

**40°**



Spraying angle

**Ceramic**



Material

**402905xx**



Cap

**5-10 Nm**



Tightening torque for nuts

**Orchard**



Treatment

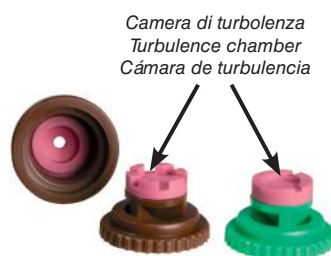
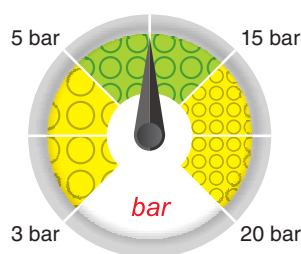
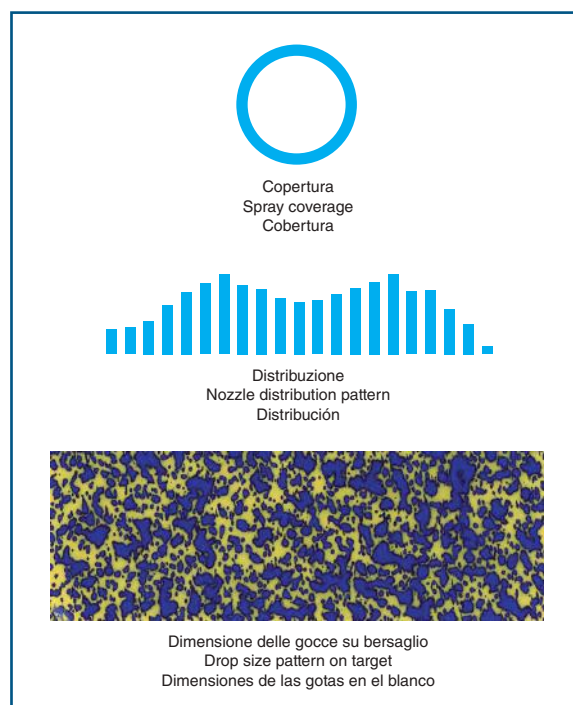
**ISO 10625**

Colour coding

**10 pcs.**

cod. + B1

Blister pack



COD.	q (l/min)																		
	3 bar	4 bar	5 bar	6 bar	7 bar	8 bar	9 bar	10 bar	11 bar	12 bar	13 bar	14 bar	15 bar	16 bar	17 bar	18 bar	19 bar	20 bar	
HCI4001	0.40	0.46	0.52	0.57	0.61	0.65	0.69	0.73	0.77	0.80	0.83	0.86	0.89	0.92	0.95	0.98	1.01	1.03	
HCI40015	0.60	0.69	0.77	0.85	0.92	0.98	1.04	1.10	1.15	1.20	1.25	1.30	1.34	1.39	1.43	1.47	1.51	1.55	
HCI4002	0.80	0.92	1.03	1.13	1.22	1.31	1.39	1.46	1.53	1.60	1.67	1.73	1.79	1.85	1.90	1.96	2.01	2.07	
HCI40025	1.00	1.15	1.29	1.41	1.53	1.63	1.73	1.83	1.91	2.00	2.08	2.16	2.24	2.31	2.38	2.45	2.52	2.58	
HCI4003	1.20	1.39	1.55	1.70	1.83	1.96	2.08	2.19	2.30	2.40	2.50	2.59	2.68	2.77	2.86	2.94	3.02	3.10	
HCI40035	1.40	1.62	1.81	1.98	2.14	2.29	2.42	2.56	2.68	2.80	2.91	3.02	3.13	3.23	3.33	3.43	3.52	3.61	
HCI4004	1.60	1.85	2.07	2.26	2.44	2.61	2.77	2.92	3.06	3.20	3.33	3.46	3.58	3.70	3.81	3.92	4.03	4.13	
HCI4005	2.00	2.31	2.58	2.83	3.06	3.27	3.46	3.65	3.83	4.00	4.16	4.32	4.47	4.62	4.76	4.90	5.03	5.16	
HCI4006	2.40	2.77	3.10	3.39	3.67	3.92	4.16	4.38	4.60	4.80	5.00	5.18	5.37	5.54	5.71	5.88	6.04	6.20	

Calcolo dei l/ha nelle note tecniche a fine catalogo

How to calculate l/ha in the technical suggestions section, at the end of the catalogue

Cálculo de los l/ha en las notas técnicas al final del catálogo