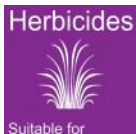


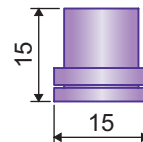
HCC HOLLOWCONE CERAMIC



Utilizzo
Use
Utilización



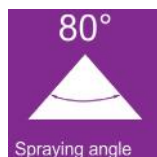
Dimensioni (mm)
Size (mm)
Dimensiones (mm)



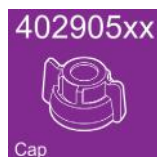
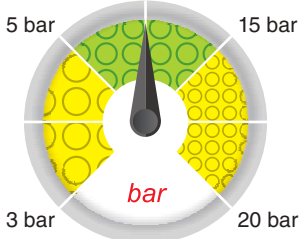
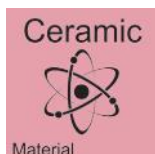
- Ugello a cono vuoto con inserto in ceramica e corpo in Delrin®.
- Il getto creato da Hollowcone Ceramic genera piccole gocce e garantisce una copertura eccellente.
- Adatto per l'utilizzo su atomizzatore.
- Perfetto per l'utilizzo su alberi e cespugli anche senza l'intervento dell'aria.
- Certificato ENAMA ed ENTAM.

- Hollowcone nozzle with ceramic insert and Delrin® body.
- Hollowcone Ceramic nozzles spray small drops and ensure excellent coverage.
- Suitable for orchard sprayer.
- Perfect for trees and bushes without requiring the use of air.
- ENTAM and ENAMA certified.

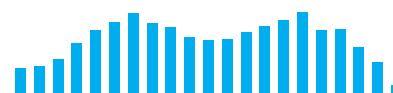
- Boquilla de cono vacío con inserto de cerámica y cuerpo en Delrin®.
- El chorro creado por Hollowcone Ceramic tiene pequeñas gotas y garantiza una excelente cobertura.
- Adecuado para el uso en atomizador.
- Perfecta para el uso en árboles y arbustos, incluso sin la intervención del aire.
- Certificado ENAMA y ENTAM.



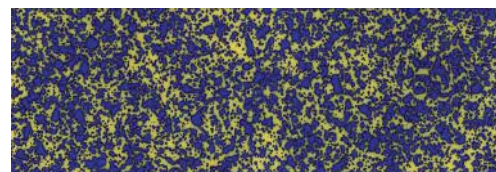
Camera di turbolenza
Turbulence chamber
Cámara de turbulencia



Copertura
Spray coverage
Cobertura



Distribuzione
Nozzle distribution pattern
Distribución



Dimensione delle gocce su bersaglio
Drop size pattern on target
Dimensiones de las gotas en el blanco

COD.	q (l/min)																	
	3 bar	4 bar	5 bar	6 bar	7 bar	8 bar	9 bar	10 bar	11 bar	12 bar	13 bar	14 bar	15 bar	16 bar	17 bar	18 bar	19 bar	20 bar
HCC005	0.20	0.23	0.26	0.28	0.31	0.33	0.35	0.37	0.38	0.40	0.42	0.43	0.45	0.46	0.48	0.49	0.50	0.52
HCC0075	0.30	0.35	0.39	0.42	0.46	0.49	0.52	0.55	0.57	0.60	0.62	0.65	0.67	0.69	0.71	0.73	0.75	0.77
HCC01	0.40	0.46	0.52	0.57	0.61	0.65	0.69	0.73	0.77	0.80	0.83	0.86	0.89	0.92	0.95	0.98	1.01	1.03
HCC015	0.60	0.69	0.77	0.85	0.92	0.98	1.04	1.10	1.15	1.20	1.25	1.30	1.34	1.39	1.43	1.47	1.51	1.55
HCC02	0.80	0.92	1.03	1.13	1.22	1.31	1.39	1.46	1.53	1.60	1.67	1.73	1.79	1.85	1.90	1.96	2.01	2.07
HCC025	1.00	1.15	1.29	1.41	1.53	1.63	1.73	1.83	1.91	2.00	2.08	2.16	2.24	2.31	2.38	2.45	2.52	2.58
HCC03	1.20	1.39	1.55	1.70	1.83	1.96	2.08	2.19	2.30	2.40	2.50	2.59	2.68	2.77	2.86	2.94	3.02	3.10
HCC035	1.40	1.62	1.81	1.98	2.14	2.29	2.42	2.56	2.68	2.80	2.91	3.02	3.13	3.23	3.33	3.43	3.52	3.61
HCC04	1.60	1.85	2.07	2.26	2.44	2.61	2.77	2.92	3.06	3.20	3.33	3.46	3.58	3.70	3.81	3.92	4.03	4.13
HCC05	2.00	2.31	2.58	2.83	3.06	3.27	3.46	3.65	3.83	4.00	4.16	4.32	4.47	4.62	4.76	4.90	5.03	5.16