



**Utilizzo**  
**Use**  
**Utilización**

**Herbicides**

Suitable for

**Fungicides**

Suitable for

**Insecticides**

Suitable for

**Dimensioni (mm)**  
**Size (mm)**  
**Dimensiones (mm)**

- Ugello a cono vuoto con inserto in ceramica e corpo in Delrin®.
- Il getto creato da HCA60 garantisce una copertura ottimale pur riducendo il rischio di deriva del prodotto.
- Adatto per l'utilizzo su atomizzatore.
- Il corpo esterno stampato in Delrin®, unito all'inserto in ceramica conferisce eccezionali caratteristiche di durata.
- Adatto per trattamenti con erbicidi, fungicidi ed insetticidi.

- Hollowcone nozzle with ceramic insert and Delrin® body.
- HCA60 spray ensures excellent spraying range, yet reducing the product drift.
- Suitable for orchard sprayer.
- Their Delrin®-molded outer body, together with their ceramic insert, ensures an exceptionally long useful life.
- Suitable for herbicides, fungicides and pesticides.

- Boquilla de cono vacío con inserto de cerámica y cuerpo en Delrin®.
- El chorro creado por HCA60 garantiza una cobertura óptima reduciendo el riesgo de deriva del producto.
- Adecuado para el uso en atomizador.
- El cuerpo exterior moldeado en Delrin®, junto al inserto de cerámica, le otorga excepcionales características de durabilidad.
- Adecuado para tratamientos con herbicidas, fungicidas e insecticidas.

**60°**

Spraying angle

**Ceramic**

Material

**402905xx**

Cap

**5-10 Nm**

Tightening torque for nuts

**Orchard**

Treatment

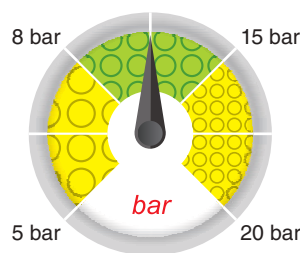
**ISO 10625**

Colour coding

**10 pcs.**

cod. + B1

Blister pack



Copertura  
Spray coverage  
Cobertura

Distribuzione  
Nozzle distribution pattern  
Distribución

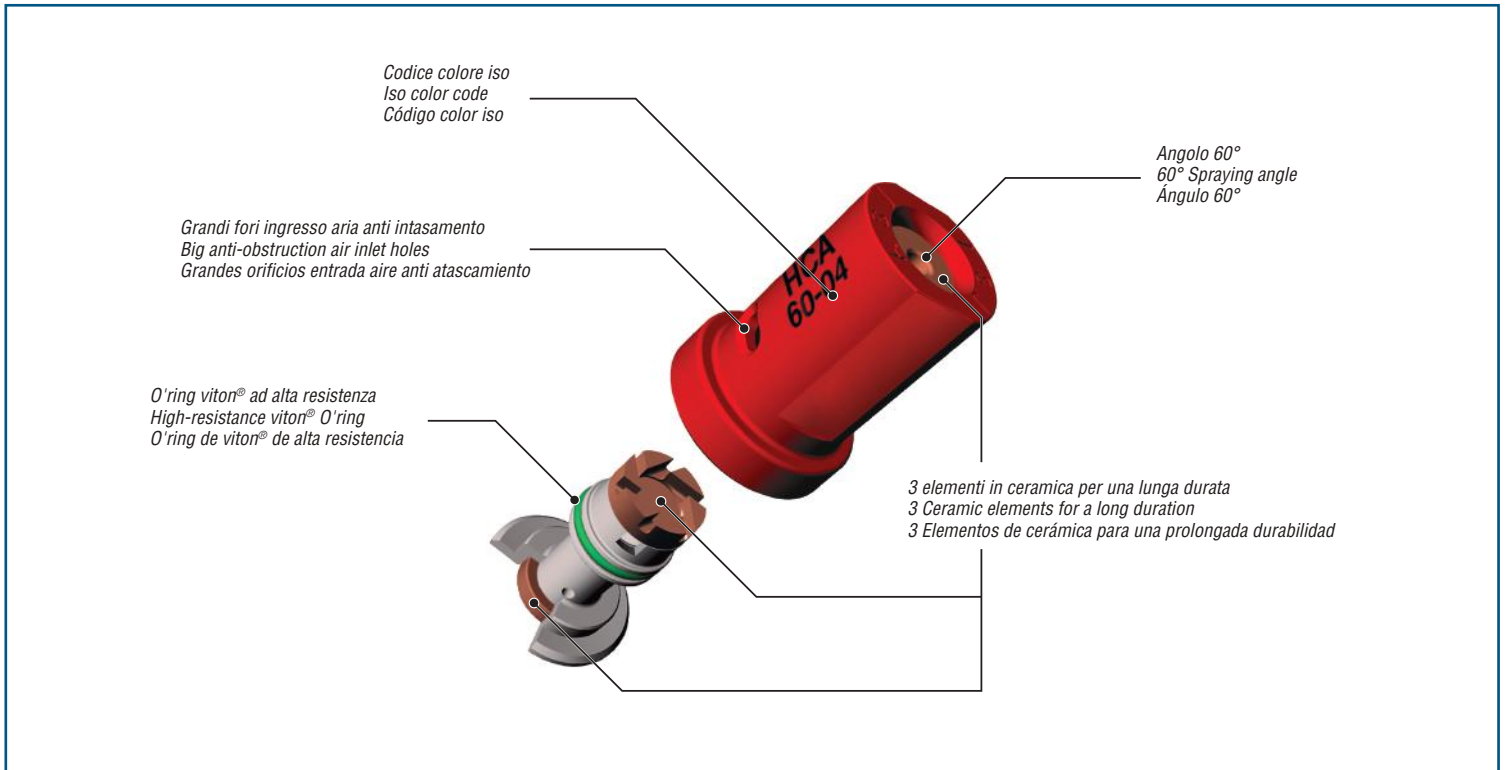
Dimensione delle gocce su bersaglio  
Drop size pattern on target  
Dimensiones de las gotas en el blanco

COD.	q (l/min)															
	5 bar	6 bar	7 bar	8 bar	9 bar	10 bar	11 bar	12 bar	13 bar	14 bar	15 bar	16 bar	17 bar	18 bar	19 bar	20 bar
HCA600075	0.39	0.42	0.46	0.49	0.52	0.55	0.57	0.60	0.62	0.65	0.67	0.69	0.71	0.73	0.75	0.77
HCA6001	0.52	0.57	0.61	0.65	0.69	0.73	0.77	0.80	0.83	0.86	0.89	0.92	0.95	0.98	1.01	1.03
HCA60015	0.77	0.85	0.92	0.98	1.04	1.10	1.15	1.20	1.25	1.30	1.34	1.39	1.43	1.47	1.51	1.55
HCA6002	1.03	1.13	1.22	1.31	1.39	1.46	1.53	1.60	1.67	1.73	1.79	1.85	1.90	1.96	2.01	2.07
HCA60025	1.29	1.41	1.53	1.63	1.73	1.83	1.91	2.00	2.08	2.16	2.24	2.31	2.38	2.45	2.52	2.58
HCA6003	1.55	1.70	1.83	1.96	2.08	2.19	2.30	2.40	2.50	2.59	2.68	2.77	2.86	2.94	3.02	3.10
HCA60035	1.81	1.98	2.14	2.29	2.42	2.56	2.68	2.80	2.91	3.02	3.13	3.23	3.33	3.43	3.52	3.61
HCA6004	2.07	2.26	2.44	2.61	2.77	2.92	3.06	3.20	3.33	3.46	3.58	3.70	3.81	3.92	4.03	4.13
HCA6005	2.58	2.83	3.06	3.27	3.46	3.65	3.83	4.00	4.16	4.32	4.47	4.62	4.76	4.90	5.03	5.16
HCA6006	3.10	3.39	3.67	3.92	4.16	4.38	4.60	4.80	5.00	5.18	5.37	5.54	5.71	5.88	6.04	6.20

Calcolo dei l/ha nelle note tecniche a fine catalogo

How to calculate l/ha in the technical suggestions section, at the end of the catalogue

Cálculo de los l/ha en las notas técnicas al final del catálogo



$$\text{Vol (l/ha)} = \frac{\text{l/min} \times n \times 600}{\text{km/h} \times D \text{ (m)}}$$

